

Visit both Exhibit Halls:
East and West

DIGITAL FABRICATION SOFTWARE, TOOLS & ACCESSORIES

ALIEN MILLING TECHNOLOGIES

ALIEN MILLING is releasing a major update to Anti-Gravity 2.0. Rebuilt from the ground up, this tool is designed to save your lab time when uploading large batches of STL files for outsourced fabrication. Stop by the booth for a hands-on demo.

anti|gravity

East Exhibit Hall

Contact Info: 844-ZIRCONIA (947-2664), 909-562-0069, info@alienmilling.com, alienmilling.com

FOLLOW-ME! TECHNOLOGY NORTH AMERICA

FOLLOW-ME!'s hyperDENT Connect is a new cloud-based file sharing platform that receives, tracks and organizes design files. For hyperDENT CAM users, it automatically populates these jobs into the parts loading queue and doubles as an effective communication tool between a lab and its customers. hyperDENT Hybrid, for the post-milling of 3D-printed parts, has been upgraded and optimized so labs can combine the benefits of each of these digital technologies into a single process.



East Exhibit Hall

Contact Info: 847-420-6542, info.na@fm-dental.com, followmetech.com

PREAT

PREAT's Digital Choice Library provides you with complete restorative control along with endless possibilities for the way you digitally design and deliver restorations. The one-scanbody-per-implant platform provides the technician and practitioner with up to nine restorative solutions at the abutment level and 17 at the fixture level. You will benefit from increased flexibility in the digital workflow as well as reduced inventory costs. Libraries are available for both 3Shape and exocad and can be downloaded for free online.



West Exhibit Hall

Contact Info: 800-232-7732, 805-202-3070, info@preat.com, preat.com

PIC DENTAL

PIC DENTAL offers the PIC System, a precise digital impression technique for implants, and PIC Pro, a cutting-edge digital workflow for full-arch implant rehabilitations. The company is a pioneer in precise implant capture using photogrammetry.



East Exhibit Hall:

Contact Info: 786-757-3265, sales-usa@picdental.com, picdental.com

CHAIRSIDE SOLUTIONS

CHAIRSIDE SOLUTIONS offers a turn-key solution for dentists to set up a digital workflow with in-house production.

West Exhibit Hall

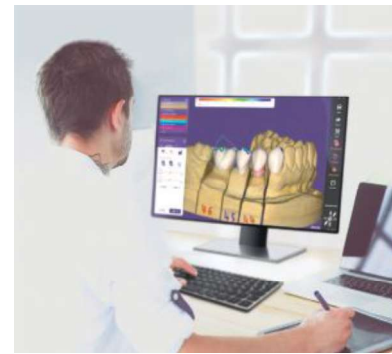
Contact Info: 516-246-2723,

info@chairsidelabs.com, chairside.com



EXOCAD

EXOCAD is presenting the highlights of its lab software, DentalCAD 3.0 Galway, as well as exoplan 3.0 Galway for implant planning. Technicians are invited to visit the exocad booth to learn more about the newest releases, experience the intuitive user interface during live software demos and engage with exocad's software experts.



East Exhibit Hall

Contact Info: 855-396-4223, info@us.exocad.com, exocad.com

ANAXDENT NORTH AMERICA

The new CM Soprano® Surface paste ceramic system makes microlayering and staining/glazing zirconia, lithium disilicate and even metal ceramic simple and predictable. The unmatched color density of Soprano stains makes them easy to control and the comprehensive color selection provides a one-stop-shop for all tooth shades.



The Soprano Surface gingiva kit is color-matched to ANAXDENT's anaxgum pink composite, creating a coordinated system of gingiva-shade composites and ceramics.

East Exhibit Hall

Contact Info: 877-897-6598, 580-798-0055, info@anaxdentusa.com, anaxdentusa.com

CIMSYSTEM

MillBox from CIMSYSTEM is an intuitive CAM software featuring an AI-driven strategy that has been improved to make your input less needed and your output more efficient. Whether you need a customized solution or an out-of-the-box, plug-and-play software, MillBox is for you. Visit the company's booth at LAB DAY Chicago or contact your MillBox reseller.



West Exhibit Hall

Contact Info: 502-473-9994, support@cimsystemusa.com, cimsystem.com

SCANTIST 3D

After application, SCANTIST 3D forms a homogeneous and very fine matting layer on objects to be scanned in order to improve optical properties. The coating evaporates (sublimates) independently after the scanning process, eliminating application problems of 3D scan sprays in the CAD/CAM process, especially in sensitive areas, and the need for a subsequent time-consuming cleaning of the scan objects and the laboratory environment.

West Exhibit Hall

Contact Info: +49 1517 2864246, info@scantist3d.com, scantist3d.com/en/

